

LinkMotion USB for CO2 Laser Detail Installation and Setup Instructions

Use 32 bit version for installing on Win 10, 8.1, 8 or 7 32 bit and Win XP operating systems.
Use 64 bit version for installing on Win 10, 8.1, 8 or 7 64 bit operating system.

LinkMotion will only work on the computer with USB port 2.0 or higher and does not work with USB 1.1. Do not attach other USB devices like keyboard and mouse that has USB 1.1 otherwise LinkMotion will not work.

If you just purchased USB Controller board and the software, you may want to refer to the document - Connecting and Wiring AGNI USB Controller for the recommended wiring of the controller board in your system.

Installation required for LinkMotion USB and USB controller:

Part 1 – Installing LinkMotion USB for Co2 Laser on Windows 10, 8.1 or 8 requires to follow Disable driver signature requirement procedure just prior to installing LinkMotion. **Then follow first part for **installation of LinkMotion USB for CO2 Laser** software. Win 7 or XP users do not require Disable driver signature procedure so they can start installing LinkMotion software.**

Part 2 - Second part is to Install AGNI USB controller driver. Do not plug the USB cable into your computer until the written instruction guides you.

Software license procedure is not necessary for LinkMotion version 4.05 and higher. User can install on any computers and use this software. Contact us for update of the new version.

Re-Launch LinkMotion means exit LinkMotion Icon from the systems tray on the bottom right by right mouse click and then launch it back on the systems tray by going to the Windows start button and All programs, Solustan, LinkMotion.

Warning for USB Controller Serial Numbers: If USB Controller's serial number is either not reconized (not certified) or not found when LinkMotion is launched it will display a message "Unrecognized serial number ____". When user clicks on OK button it will also display a message "The maximum working area is 1'x1" or 25.4mm x 25.4mm". If controller is not purchased from Solustan or Solustan approved dealer it can display this message "Your controller is not certified. Please contact Solustan for help". Contact Solustan for resolving this problem. G-Code Files tab(menu) also will not be available for processing previously generated gcode files.

USB Contollers serial numbers can be programmed for limited table size output for testing the software in demo mode. When testing this demo software it will not allow user to enter and save any larger table size in Machine properties area. It will not allow user to send any jobs larger then the available table size. Make sure to test the jobs that fit withing that available area.

Part 1 - Installation Procedure for LinkMotion USB for CO2 Laser:

Note that you must have **administrative privileges on the computer or Administrator should install** this in order to install LinkMotion properly. **Please make sure that you are not running any software applications at the time of this installation. Virus protection softwares needs to be turned off before installing this software. You can turn that back on after the installation is finished.** Most of the installation process is self-explanatory by following the instructions from the screen. You can stop the installation at any time by clicking "Cancel".

Windows 10, 8.1 and 8 users should follow Disable driver signature requirement procedure just prior to installing LinkMotion software as explained separately for each one in next few pages. Windows 7 and XP users can skip that part and go to LinkMotion installation part of the instructions.

Installing on Windows 10, 8.1 or 8 operating system:

Do not install LinkMotion until following procedure is done for Windows 10, 8.1 or 8. In Windows 8.1 and 8 operating system, **you must first disable the Driver Signature Requirement to install the LinkMotion driver.** Once the Driver Signature Requirement is disabled the system will restart the computer and then user will be able to install LinkMotion driver using our installation instructions. Next time when computer restarts the Driver Signature Requirement will default back to enabled. Once the LinkMotion driver is installed, you can install a new version of LinkMotion without having to disable it again in Windows. We have included separate instructions for Windows 10, 8.1 and Windows 8. Please follow proper instructions for your computers operating system.

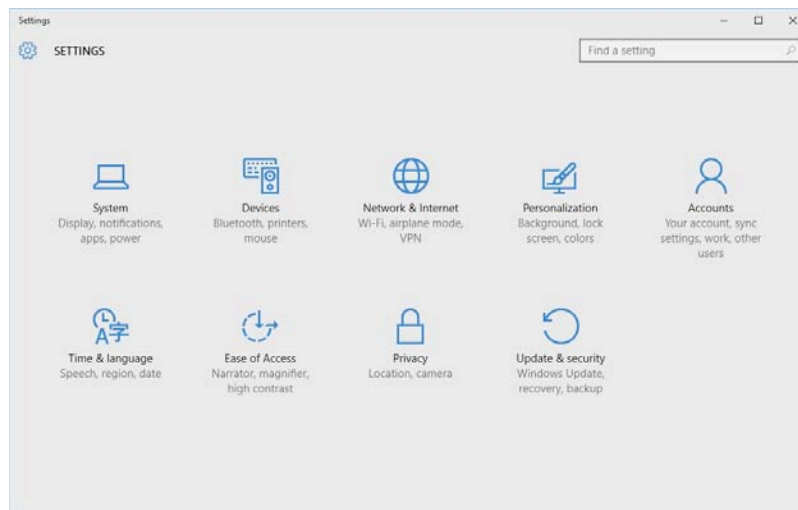
Windows 10, 8.1 and 8 user interface has newer design and it is different than all previous version of the Windows. There are more than one ways to go to the Control Panel and you should use what you are comfortable with. Control Panel can be selected by bringing the arrow of your mouse at the bottom right corner and select Settings. Under the settings, second available selection is Control panel. Click on this and all Control Panel selections are available. Remember to use apply button and save information when you make any changes in the settings for it to be effective.

Disable Driver Signature Requirement under Windows 10:

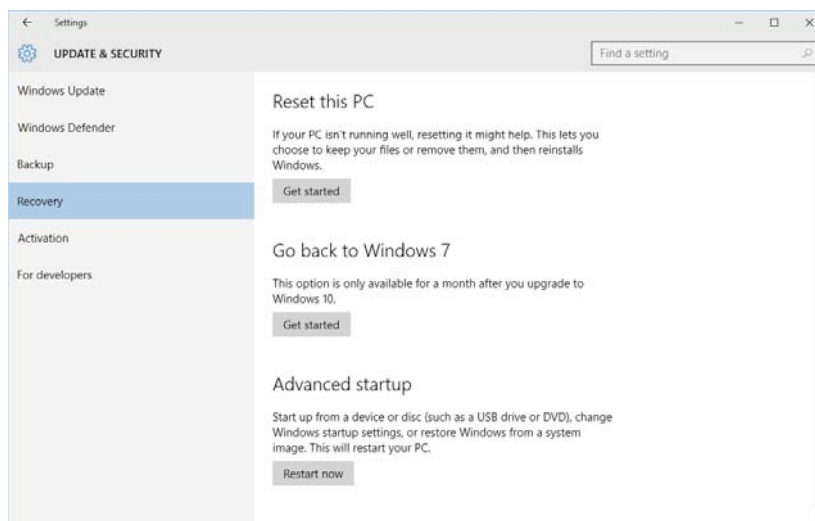
Go to Windows **Settings** dialog box by one of the following methods:

- (1) Click on the Windows **Start button** and select **Settings**.
- (2) Select **All Apps** selection above the Start button of Windows and select **Settings**.
- (3) Click on the **No New Notification** icon on the Systems Tray at the bottom right. Here click on the **All Settings**.

You will see the dialog box for Settings as shown below.



Click on the **Update & Security, Windows Update, Recovery, Backup** and you will see the following options shown in the picture below.



Select **Recovery** on the left side and Click on the **Restart Now** button under Advanced startup on the right side.

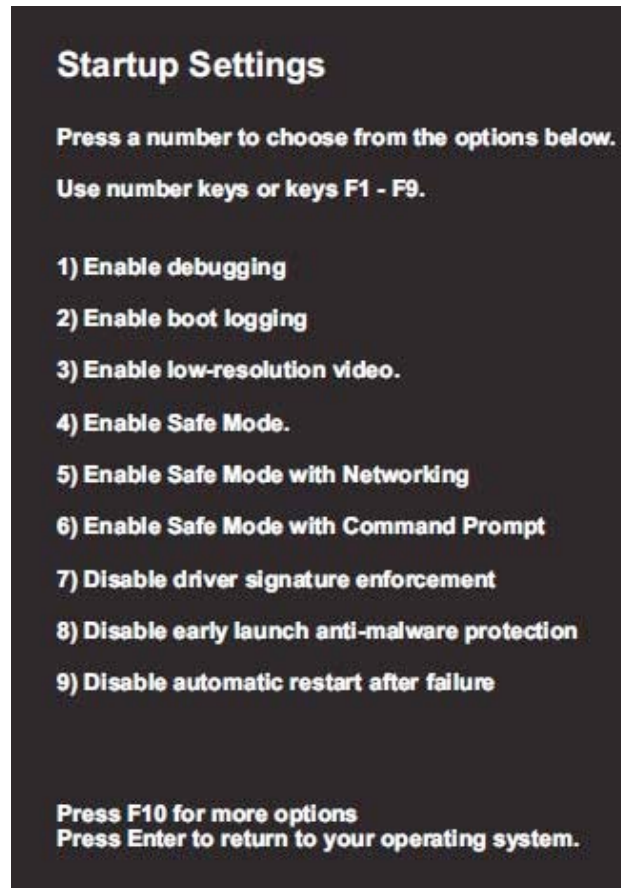
Here select **Troubleshoot**.

Select **Advance Options** under **Troubleshoot** selection.

Select **Startup Settings** under **Advanced Options** selection.

Select the **Restart** button from the bottom right under **Startup Settings** selection.

Now Computer will restart again and you will see a screen for **Startup Settings** with many selections available listed with numbers One through Nine as shown in the picture below.



Press F7 or number 7 key on your computer keyboard when you see the screen as shown above. This will disable the Driver Signature Requirement. After you press F7 or 7 key your computer will start launching the operating system. After your operating system is launched follow the normal login procedure and install LinkMotion driver by following the installation instructions from the documents provided by Solustan.

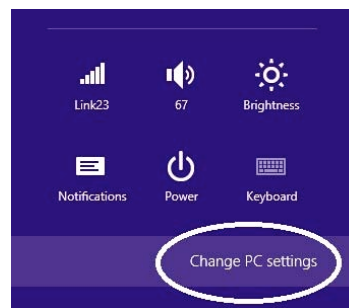
If for any reason you had to restart your computer before installing LinkMotion you need to start the Disable driver signature enforcement procedure again before you can install LinkMotion. LinkMotion printer driver will be installed only if this procedure is followed properly.

Disable Driver Signature Requirement under Windows 8.1:

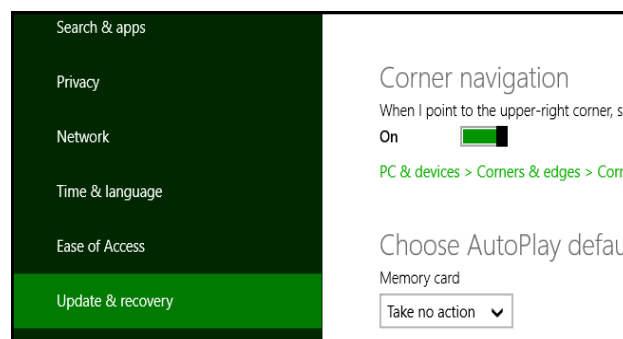
Open the Charms Bar in Windows 8.1 by bringing the arrow of your mouse on the bottom right corner of your computer screen and **select Settings** (first at the bottom) as seen on the picture below.



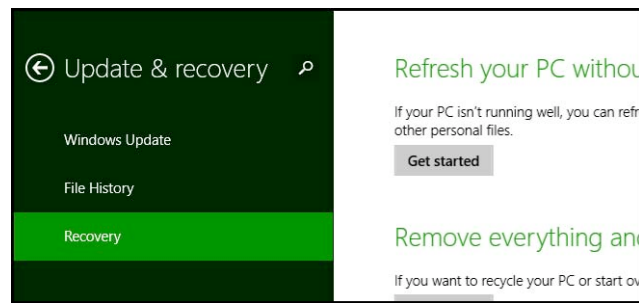
Once Settings is selected you will see the following screen and **select Change PC Settings** as shown below.



Under Win 8.1 when Control Panel opens, select **Update & recover** section from the left side as shown in the picture below.



Under Win 8.1 Click on the **Recovery** option on the left side as shown in the picture below. Once selected, you will see an **Advance startup** section on the right side. You will need to click on **Restart now** button.



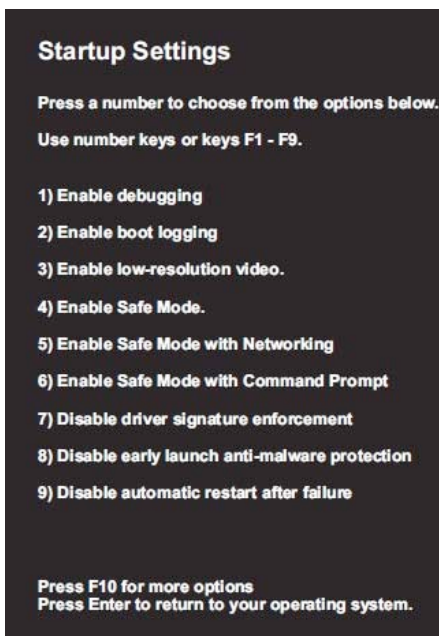
Now your computer will restart. Once the Computer has restarted, **Choose an Option** selection will be available. Here **select Troubleshoot**.

Select **Advance Options** under **Troubleshoot** selection.

Select **Startup Settings** under **Advanced Options** selection.

Select the **Restart** button from the bottom right under **Startup Settings** selection.

Now Computer will restart again and you will see a screen for **Startup Settings** with many selections available listed with numbers One through Nine as shown in the picture below.



Press F7 or number 7 key on your computer keyboard when you see the screen as shown above. This will disable the Driver Signature Requirement. After you press F7 or 7 key your computer will start launching the operating system. After your operating system is launched follow the normal login procedure and install LinkMotion driver by following the installation instructions from the documents provided by Solustan.

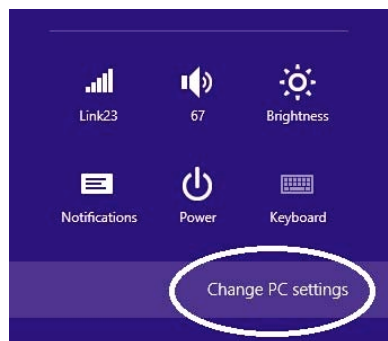
If for any reason you had to restart your computer before installing LinkMotion you need to start the Disable driver signature enforcement procedure again before you can install LinkMotion. LinkMotion printer driver will be installed only if this procedure is followed properly.

Disable Driver Signature Requirement under Windows 8:

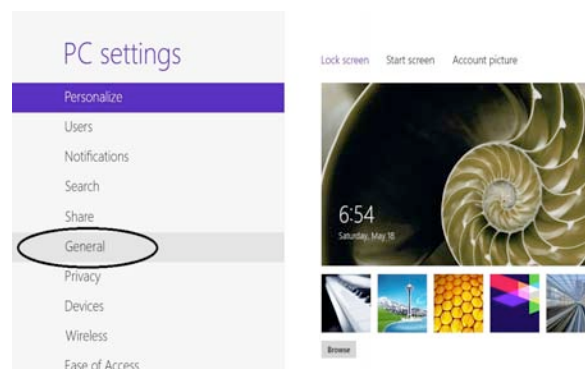
Open the Charms Bar in Windows 8 by bringing the arrow of your mouse on the bottom right corner of you computer screen and **select Settings** (first at the bottom) as seen on the picture below.



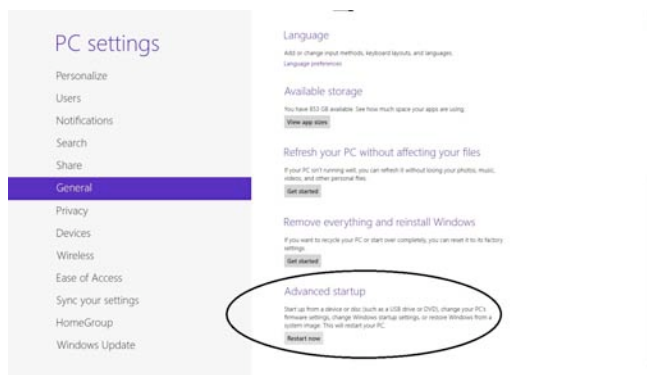
Once Settings is selected you will see the following screen and **select Change PC Settings** as shown below.



Under Win 8 select General from the left side as shown in the picture below.



Under Win8 Scroll to the bottom of General **and select Restart Now under Advanced Start-Up** from the right side as shown in the picture below.



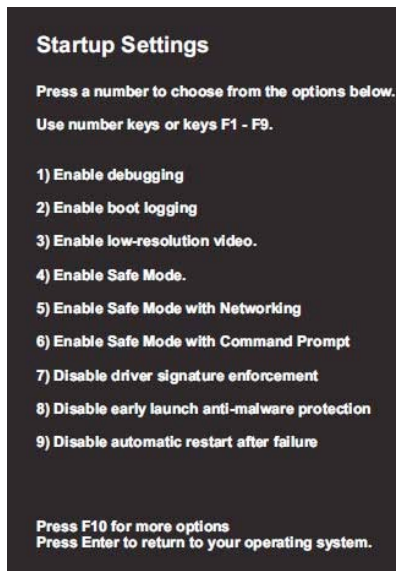
Now your computer will restart. Once the Computer has restarted, **Choose an Option** selection will be available. Here **select Troubleshoot**.

Select **Advance Options** under **Troubleshoot** selection.

Select **Startup Settings** under **Advanced Options** selection.

Select the **Restart** button from the bottom right under **Startup Settings** selection.

Now Computer will restart again and you will see a screen for **Startup Settings** with many selections available listed with numbers One through Nine as shown in the picture below.



Press F7 or number 7 key on your computer keyboard when you see the screen as shown above. This will disable the Driver Signature Requirement. After you press F7 or 7 key your computer will start launching the operating system. After your operating system is launched follow the normal login procedure and install LinkMotion driver by following the installation instructions from the documents provided by Solustan.

If for any reason you had to restart your computer before installing LinkMotion you need to start the Disable driver signature enforcement procedure again before you can install LinkMotion. LinkMotion printer driver will be installed only if this procedure is followed properly.

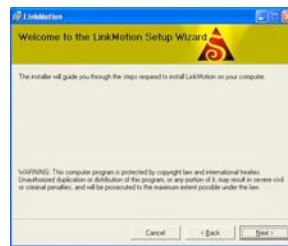
Installation for LinkMotion driver software for Co2 Laser:

(1) After downloading the LinkMotion driver software, unzip the files and save by creating a folder name LinkMotion. Now **double click on the file name “LinkMotion_Laser64_Setup.exe” for 64 bit version or “LinkMotion_Laser32_Setup.exe” for 32 bit vrsion or “Setup.exe”** and installation will begin.

(2) Click on the Next Button.



(3) Click on the **Next Button**.

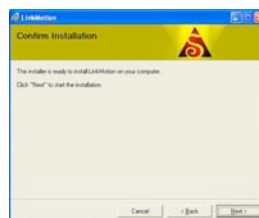


(4) When you get to the License Agreement dialog (see above), **you must read the agreement. If you agree, go ahead and click the radio button "I Agree" for the installation process to continue and Click on the Next Button.**



(5) After you have read and agreed to the License Agreement, you will be asked to specify the installation folder. In most cases you can leave this as the default setting.

(6) Click on the Next button once again and you should see a progress bar for installation.



(7) Later during the installation you will see **Choose your machine** for installation. The default machine name is **My Machine**. Scroll on the arrow to the right and many more machine names are available. Please choose your machine name. **If you wish to add your machine name that you do not see here, Please contact us.**

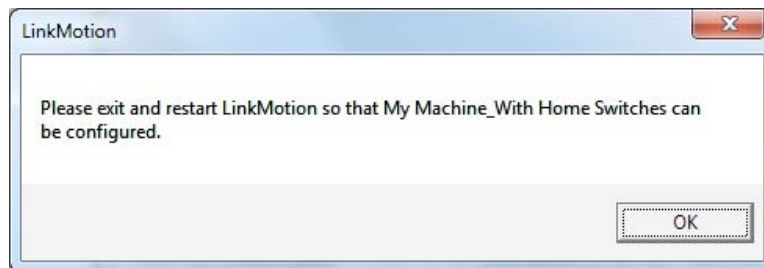
Do not create or write your own new machine name here at the time of this installation.



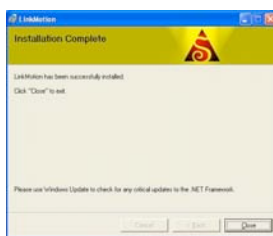
(8) You will see a message shown below before this installation is complete. Here **select Install this driver software anyway** to make sure that LinkMotion printer driver for your machine gets installed properly. **Name of the printer driver will be the name of the Machine you select from the above selection. Sometime this message may appear in the background of another message and you need to make sure to bring the in the foreground and make proper selection for Installing this driver software anyway is done. It will not install the printer driver if this was not followed properly.**



(9) Message displayed below is a reminder to Re-launch Linkmotion one time after installation is finished for the driver to be recognized properly and Click on the OK button here. **Make sure to click on the OK button after you click on the "Install this driver software anyway".**



(10) Click on "Close" when the installation is complete as shown below.



Icon shown below should show up in system tray at the bottom right. If LinkMotion icon does not show up in the systems stray in case of Win 7 follow directions from below and setup to view that icon all the time.

Go to **Control Panel** of windows from the **Start button**. Click on the **Appearance and Personalization**. Go to the **Taskbar and Navigation(Win 10)**, **Taskbar(Win 8)**, **Taskbar and Start Menu(Win 7 and XP)**. Click on the **(Notification area on Win 10) Customization on the taskbar**.

Win 10 - Click on **Select which icons appear on the taskbar**. Here check **LinkMotion icon** to be on.

Win 8, 7 - Here click on the box at the bottom left for **Always show all icons and notifications on the taskbar**. Click on the **OK button**.



To view all different files and folders that is installed for LinkMotion one more setup is necessary using following directions in Win 10, 8 and 7:

Go to **Control Panel** and click on the **Appearance and Personalization**.

Under **Folder Options** Click on the **Show Hidden files and folders**.

In the View section, look for **Hidden files and folders**.

If not checked already, check the button for **Show hidden files, folders and drives**.

Click on the **Apply button**. Click on the **OK button**.

(11) Power Option Settings:

Windows 10, 8 and 7: Windows 10, 8 and 7 operating system disables USB port connections when it is in power save or screen saver mode. Following settings will keep USB port always active. Please make sure to set this up properly. Power save mode can be turned off.

Go to **Control Panel > Click on Hardware and Sound > Under Power Options Click on Change when the computer sleeps(Win 10, 8 or 7)**, **Change Power-Saving Settings(Win 10, 8 or 7) > Balanced** is selected by default. On the right **Click on Change Plan Settings(Win 10, 8 or 7) > Select Never** for put the Computer to sleep by scrolling on the arrow. **Click on the Change advanced power settings from below > Double click on the USB Settings > Double click on the USB Selective Suspend Setting > Click on the Settings and Select Disable (for Desktop computers) or Select Disable for On battery as well as Plugged in (for Laptops) > Click on the Apply button and Click OK.**

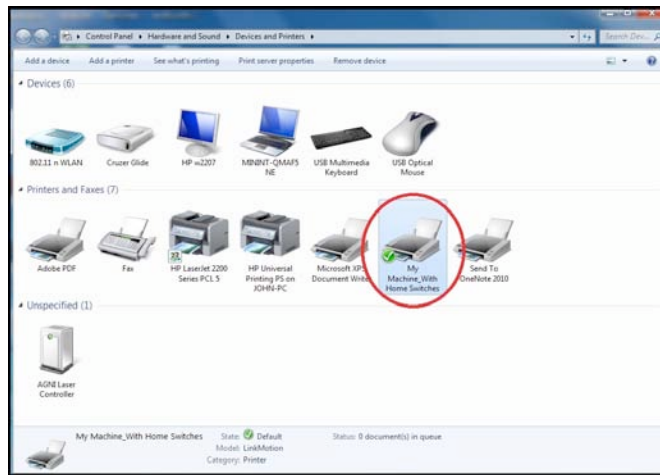
Windows XP: Go to **Control Panel > Power Options > Under Power Schemes select Never for System Standby as well as System hibernates and Ok** will save this setting.

(12) Setting up the Default Printer:

You want the LinkMotion printer to be your default printer. Open the Control Panel > View devices and printers(Win 10, 8 or 7) or Printers and Faxes menu(Win XP) and find under **printer "My Machine-USB"** name as shown in the picture below. **Right click on this printer and select "Set as Default Printer"**. **This**

name may be different if you selected your machine name. We give you a choice for selecting the machine name at the time of the installation with a scrolling arrow on the right side.

Do not create or write your own new machine name here at the time of this installation.



(13) Multiple users:

Under Windows 10, 8.1, 8 and 7 LinkMotion version 4.06 onwards allows multiple users to use LinkMotion for the same computer. Installation of the LinkMotion.INI and temp.txt file locations have been moved in the following locations:

C:/ProgramData folder > Solustan folder > LinkMotion folder > LinkMotion.INI file and bmp files.

C:/ProgramData folder > Solustan folder > LinkMotionUSB folder > Tempfiles folder > temp.txt file.

Previous user should always log off before another user logs on and starts using LinkMotion.

Under Windows XP version 4.06 onwards, LinkMotion.INI and temp.txt files are installed in the following locations:

C:/Document and Settings folder > All Users folder > Solustan folder > LinkMotion folder > LinkMotion.INI file.

C:/Document and Settings folder > All Users folder > Solustan folder > LinkMotionUSB folder > tempfiles folder > temp.txt file.

Windows XP has the limitation to allow only one user to use LinkMotion properly. Please make sure to install properly for one user.

(14) International Customers need to check following:

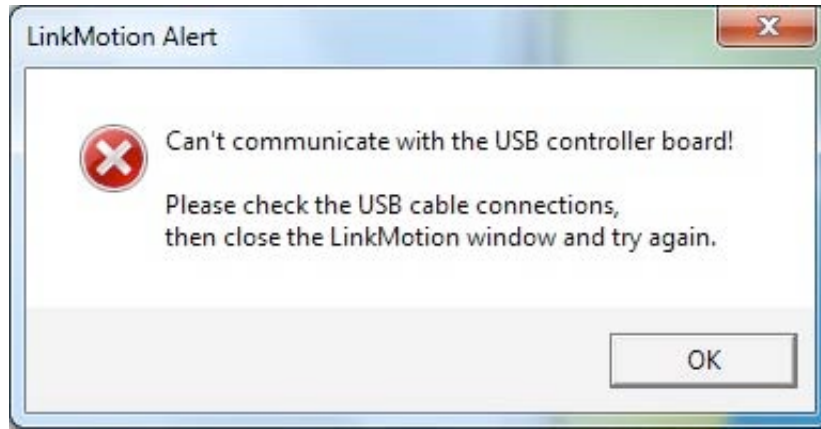
If you are using Windows operating system for other languages please make sure that following settings are selected for LinkMotion to work properly.

Win XP: Go to the **Start button > Control Panel > Regional and Language Options > Click on the Customize button.** Here Decimal Symbol should be ,(Full stop or Period) selected. Do not select ,(Comma). If you had to change **click on the Apply button and Click OK.**

Win 10, 8 users need to figure out to see the Control Panel and then follow Win 7 instructions.

Win 7 32/64: Go to the **Start button > Control Panel > Clock, Language, and Region > Click on Change input methods(Win8) or Change keyboards or other input methods(Win7) > Select Format tab(menu) > Click on the Additional settings button.** Here Decimal Symbol should be ,(Full stop or Period) selected. Do not select ,(Comma). If you made any change it is important to **click on the Apply button and Click OK.**

You are done with all settings for windows. LinkMotion installation procedure is complete and **now follow the USB controller driver installation procedure.** When USB controller driver is not installed, LinkMotion will not find the controller so you will see the following message if you launch LinkMotion. Once the USB Controller driver is installed properly you will not see this message when you launch LinkMotion.



Re-Launch LinkMotion:

It is extremely important to Re-Launch LinkMotion first time after installing and then if you replace or change LinkMotion.INI file for it to be effective. It is also important to Re-launch when you change the machine's table size or DPI selection for LinkMotion USB Laser product.

Exit the LinkMotion (icon) applet by right mouse click from the systems tray at the bottom right. LinkMotion icon should go away from the systems tray.

Now launch it back again by following and selecting the path Windows Start button>Program Files or All Programs >Solustan>LinkMotion by the arrow of your mouse.

Uninstalling LinkMotion:

Please make sure of the following before you uninstall:

Your specific machine related settings are saved as **LinkMotion.ini** file. This file can be **saved** from **General Options Menu** and simply click on the **Save button**. It is preferred that you give this file a unique name and save it properly to make it easy to retrieve it in future. Different users can save under different names. Similarly you can **Load** that file back after another installation of LinkMotion by going to the General Options menu in LinkMotion and clicking on the **Load button**. Restore Default button allows you to load default original INI file that is supplied with LinkMotion. **It is very important to exit LinkMotion applet and Re-launch the applet when you make any changes for it to be effective. Understand the definition of Re-Launch from below.**

Please make sure of the following before you Re-Install:

LinkMotion is a Windows compatible driver. It does not need to be install or uninstall frequently. However, if it is required to re-install the driver, the following are useful pointers to remember.

There is not any easy way to remove and install new version of the driver in Win XP operating system. It is necessary to go through uninstall described in our documents. Additionally, there may be a Need to manually remove Files from various Windows directories in the PC.

Both, Win 10, 8, 7 32 and 64 bit versions are well organized to make fresh installations of the same or newer versions of LinkMotion.

1. It is not proper and will not help to uninstall and install the same version of the LinkMotion one after another, if you find it to be not working properly.
2. Windows 10, 8 and 7 does not allow removing of an installed driver and re-installing of the same driver unless necessary changes are made to the driver installation software.
3. In case of going back and forth between earlier and newer driver software, the system may be armed with incompatible versions of the driver and applet. This is likely to cause more problems.
4. Once a driver is installed in Win 10, 8 and 7 system, it is permanent. The driver cannot be unloaded easily. The operating system is more robust and more stable as a result.
5. The best thing to do is to understand the structure of the driver. It is dictated by Windows and Microsoft web sites can be very useful in understanding drivers.
6. We will only discuss what is important here. Every driver is made available with a LMVC64*.inf file. This file controls the installation of the driver.
7. Once you install a LinkMotion driver, a driver instance is created in the appropriate folders of Windows 10, 8 and 7 system. If it is needed to re-install LM USB or LinkCAM, take the following steps:
 - A. Open the file LMVC64.inf in any editor.
 - B. Find the line “DriverVer=06/24/2011,1 “ with the date and installation number.
 - C. If possible, change it to today's date.
 - D. If it is the same date, change the number at the end of the line.
 - E. Save the file.

F. Now, when you uninstall, the older installation, it will remove applet and other files. However, it will archive the last version of the driver.

G. The new installation will install new version of the driver as long as the date or the instances are different and newer than the previous installation of the driver.

H. There is going to be matching driver and applet in the system.

J. It is important to make sure that the firmware in the USB controller matches the proper version of the LM software.

Uninstall LinkMotion Procedure:

Make sure the LinkMotion applet is closed. Open the **Start menu** and select the **Control Panel**. Double-click on **Add or Remove Programs**. Look for LinkMotion entry in the list and click on that. **Select "Remove" and answer "Yes"** when it asks you if you really want to remove LinkMotion.

LinkMotion.INI file (configuration file) does not get deleted with uninstall procedure.

If you want to delete your existing INI file following is the procedure for Win 10, 8 or 7:

LM version 4.06 and higher: C:/ProgramData folder > Solustan folder > LinkMotion folder > LinkMotion.INI file and bmp files.

LM Version 4.05 and lower: In the C:\ hard drive Find folder name **Users> Folder with users (your own name) name> Folder name AppData> Folder name Roaming>Folder name Solustan> Folder name LinkMotion> LinkMotion.INI. Delete this file.**

If you want to delete your existing INI file following is the procedure for Win XP:

LM version 4.06 and higher: C:/Document and Settings folder > All Users folder > Solustan folder > LinkMotion folder > LinkMotion.INI file.

LM Version 4.05 and lower: In the C:\ hard drive Find folder name **Document and Settings> Folder with users (your own name) name> Folder name Application Data> Folder name Solustan> Folder name LinkMotion> LinkMotion.INI. Delete this file.**

Read and understand detail LinkMotion Control pad warnings and AGNI USB Controller warnings in the following pages and Laser warnings from the full manual before operating your LinkMotion driver software for CO2 Laser product and your Laser machine.

Warnings for LinkMotion Control Pad:

- 1. Use the 'Zero (Ins)' key on your Numeric Key Pad or quickly press 'Space Bar' to Pause the machine operation. LinkMotion needs to be in the foreground and in an active mode when Pause operation is exercised using PC keyboard. Space bar pressed for a longer time will also pause the job in a momentary mode where job will continue when Space bar is released. When Pause activated with zero or quickly pressed space bar, a message box will come up for a decision to Continue or Quit the job. (Sometimes this message box is in the back of your Control pad and you may have to bring it to the front simply by clicking on the system tray's active LinkMotion application.) At this point, make the necessary selection. Click YES to continue the job or No to stop the job completely. After you select NO you will see another dialog box asking you if wish to quit and stay in the position you are or you wish to go back to X, Y (0, 0) position. Make your selection and park your laser head properly.**
- 2. When pause is called for during a raster (engrave) operation, the pause will not take place until the laser beam reaches one of the ends of the active scanning line.**
- 3. Control Pad for LinkMotion allows only one direction movement at a time. Only use your computer keyboard (numeric keypad) for these movements. Do not use mouse and click on the arrows of your Control pad screen. If you do, it will activate the 'nudge' feature.**
- 4. A single mouse click is used to exercise the 'nudge' feature. Mouse may be used for just a few Control Pad functions. These are,**
 - Click Home button to activate home sequence.
 - Click Repeat button to repeat the previous job.
 - Click one of the Pause buttons to pause the job processing operation
- 5. Once a job is sent or you have activated the LinkMotion applet, it shows up in the bottom bar where active applications are displayed.**
- 6. Repeat Key from Control Pad (either of the Enter keys from computer keyboard) will process immediately the last job sent to the controller without sending the job again from the PC to the controller.**
- 7. Wireless keyboard and wireless mouse should be checked fully before using them. One of the possible problems with the wireless keyboards is that Control pad keys may not send out information fast enough for machine to move properly.**
- 8. We have done preliminary testing with wireless control pad and most keys function well when an individual key is pressed. When two keys are pressed together, it may not work properly. An example is pressing one directional key 6 to move the X axis going to the right and then try pressing key 5 while holding down the key 6 to make it go faster may not work well.**
- 9. Design using plate size in the Materials Properties Tab is fully tested only with Corel Draw. If you are using any other design application you need to test before you start using the feature.**
- 10. IMPORTANT FEATURE**

It is possible for the user to turn on the laser power from the Control Pad for testing purpose only. LinkMotion will turn on and off the laser power, when required, during processing of an actual job. The turning on off the power from the Control Pad is only for testing purposes like checking the actual power v/s calculated power, measuring power level for PWM pulses, making a temporary park on the material, etc.

Have the Control Pad in the foreground on the PC screen.

Hold down the I/O 1 key of the numeric keypad with a finger. Keep it down.

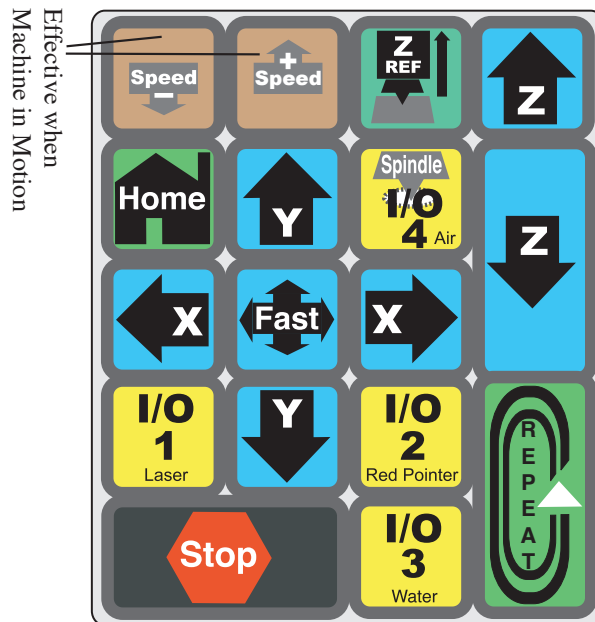
Note a message on the screen that warns you whether you really wanted to turn ON the power.

Click NO if you did not mean to turn ON the power with a mouse click.

Click YES if you wanted to turn ON the power.

As soon as you click YES, the power will be ON as long as you keep your finger on the I/O 1 key. The power level and frequency will be selected from the black color settings in the Materials Tab of the control pad.

Control Pad for LinkMotion



All the keys are active when LinkMotion Control Pad is in foreground on the screen **except the keys for Speed + (Up) and Speed - (down)**. Speed Up and Speed Down keys are effective when job is in process and machine is moving. Speed up key will not go to any higher speed then what you have declared in the Job feed rate of Materials Menu.

When jogging X and Y axis and pressing the Fast Key at the same time will double the speed of jogging. Typically, when jogging action takes place, the jogging speed will be 50% of the declared jogging speed in the Materials Menu of LinkMotion. Upon depressing Fast Key while holding down the directional key for jogging, the machine will jog at full speed or twice the speed of normal jogging.

Use Zero key or Quickly pressed Space Bar of your keyboard to Pause. Control Pad needs to be in the foreground and active mode for pause to be effective for LinkMotion product. Space bar pressed for a longer time will also pause the job but it will pause in a momentary mode where job will continue when Space bar is released. When Pause activated with zero or quickly pressed space bar, you will see a message box asking you if you want to **Continue or Quit the job**. Sometimes this message box is in the back of your Control Pad and you can bring it to the front simply by clicking on the systems tray's active LinkMotion application. **Click Yes to continue the job or no to stop the job completely.** If you selected no and job was stopped, it will also ask you if you wish to stop where you are or you can select to go back to the starting position. **Repeat Key** will process immediately the last job sent to the controller without generating and then sending the job again from the PC to the controller.

WARNING: Do not use the arrow keys elsewhere on the keyboard in place of the Control Pad Keys. It may cause unpredictable results. Do not keep Num Lock key pressed or do not click many times at a fast speed. You need to gently press and release and observe the speed increase or decrease. **Wireless keyboard and mouse are not recommended.** In case of wireless, Control pad keys do not send out information fast enough for machine to move properly. We have done preliminary testing with wireless control pad and most key functions work well when individual key is pressed. When two keys are pressed together it does not work. An example - Press one directional key 6 to move the X axis going to the right and then press 5 key to make it go faster. **May not work well with the wireless keyboards.**

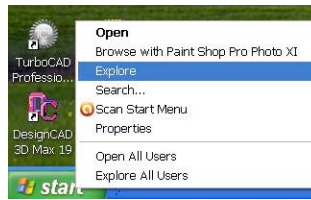
Part 2 - Install AGNI USB Controller Driver:

Do not plug the USB controller using the USB cable until it is asked for in the instructions. Always plug the controller directly into your computer's USB 2.0 connection when instructed.

If the controller is plugged into the PC via USB hub or other extension devices, it is important to note that the third party devices should meet USB 2.0 specifications. If the hubs or other extension devices cause problems, connect the controller directly to the PC to isolate USB related problems.

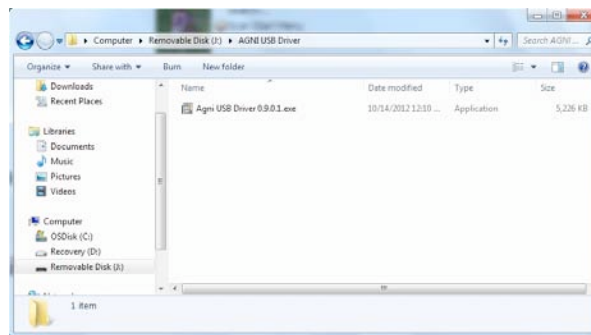
Installing AGNI USB Controller driver for Win 10, 8, 7 - 32 or 64 and Win XP operating System:

Make sure your LinkMotion CD is in the computer. If you receive the software by internet you should unzip and find a folder name USB Controller Driver and follow the instructions from step (3).



(1) Go to the start button of Windows at the bottom left and **Click with the right mouse button and select Explore.**

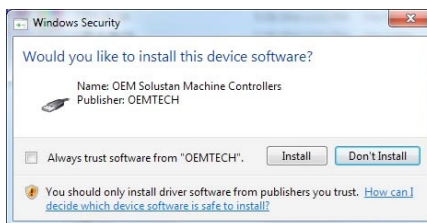
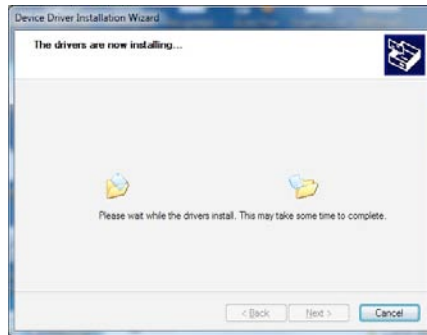
(2) Navigate and select LinkMotion CD and the folder name **USB Controller Driver** from software you received from us. **Select and open a USB Controller Driver folder** from the right side.



(3) You will see a file name AGNI USB Driver 1.0.0.0.exe as shown in the picture above. **Double click on this file** and it will start installing the driver. Your computer setup may ask for special permission to install unknown vendor and you can **click on the Yes button** to start.



(4) You will see the following two screens as installation is in process. Click on **Install button** on the second screen for Windows Security.

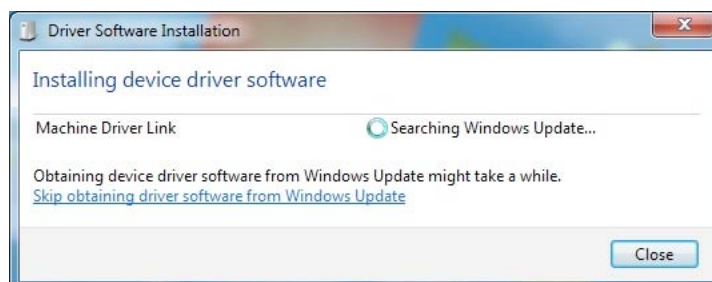


(5) When you see the dialog box for Device Driver Installation Wizard, **click on the Next button**. It just takes a few seconds to install the USB driver. When installation is finished you will see the following screen and click on the **Finish button**.

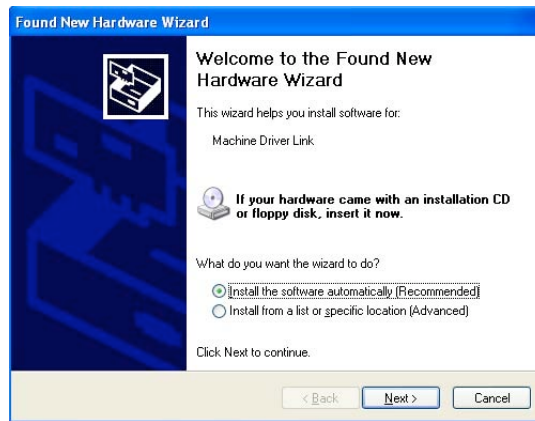


(6) **Now plug in the USB cable**. When you plug the USB cable in the computer you will see a message for found new hardware at the bottom right in the systems tray or the screen. Double Click and open it.

Dialog box shown in Windows 10, 8, 7:



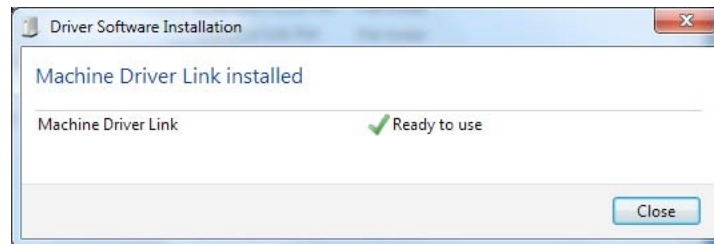
Dialog box shown in Windows XP:



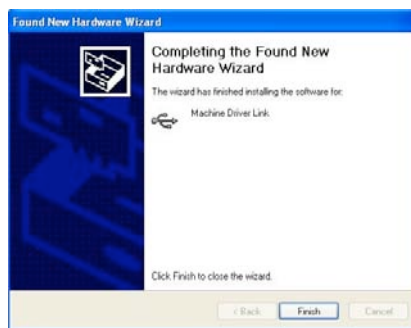
(7) On Win 10, 8 and 7 first dialog box shown above will be displayed and it can automatically search and then install the driver from your computer. User can save time by clicking on the message **Skip obtaining driver software from Windows Update** and click Yes on the next message (picture not shown). On Win XP Found new hardware wizard dialog box shows up and make sure to check the button for **Install software automatically (Recommended)**. **Click on the Next button.**

You will see the installation procedure collecting and installing the necessary files in proper locations.

Dialog box shown in Windows 10, 8, 7:



Dialog box shown in Windows XP:

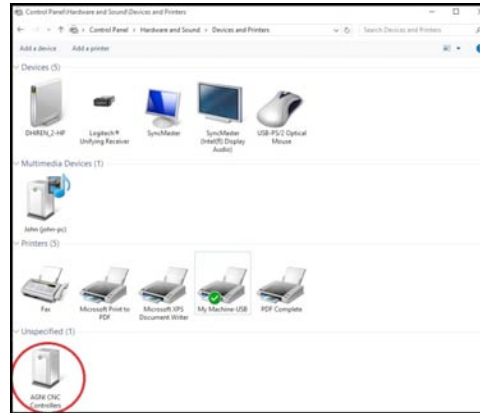


(8) When it finishes automatic installation you will see the message shown above for Win 7, 8 and 10. **Click on the Close button.** On Win XP it displays different display and click on the **Finish** button here.

(9) The proper installation of 32 bit AGNI USB Controller driver “**AGNI USB Controller**” driver can be checked and confirmed if device will work properly in the **Windows Device Manager**.

Properly installed **AGNI USB Controller** under **Device Manager** will show as **Solustan Machine Controller** and **Machine Driver Link** under that. Double click on **Machine Driver Link** and it should show you a message **This device is working properly** if it is installed properly. **This is a driver for Communication with the USB Controller and it is not a printer driver.**

Under Win 10, 8 and 7 user can see it installed as shown in the picture below in Hardware and printers area. This driver does not display on the Windows XP operating system.



If it is not installed properly please make sure to check your cable connection, follow proper procedure or contact Solustan.

(10) Remember to plug in the compatible SD memory card into the USB Controller card. Approximately 1minute of machine work uses 1MB of memory. This controller supports up to 2GB Memory. **We have provided the list of SD memory we have done testing with.**

If you are installing for the first time you do not need to worry about next step for updating the firmware. We ship all USB controller boards with latest firmware.

(11) Firmware update for AGNI USB Controller board:

This procedure may be necessary only when we send you an updated firmware or updated LinkMotion driver software to work with latest firmware properly.

Exit LinkMotion from the bottom right by right mouse click on the LinkMotion Icon. Now disconnect USB cable from the computer end, wait for a minute and re-connect back one time. Firmware update requires USB controller board connected to the computer.

Double click on the file name **AGNI Updater 3060.exe** or with the latest number that we have provided. Click on the big button **AGNI FirmwareUpdater 3060**. This will take a few seconds and when it is done updating it will give you a message **Update Successful**. Click on the **OK** button and **unplug and replug the USB cable to recycle the power for USB Controller** and you are done with the firmware update.

If you are simply updating the USB controller board firmware or updating the LinkMotion driver version then you will simply need to exit the LinkMotion applet by right mouse click and Re-Launch it from the Start menu and start working with it again.

Make sure and understand the LinkMotion driver features and then start working with your machine. It is always a good idea and a good practice to turn on the PC first and your controller/driver module later. In the same manner, it is always a good Idea to turn off the PC last when you switch off the system.

Warnings for Laser/Agni Controller board:

1. Plug the LinkMotion controller cable directly into your computer's USB 2.0 connection.
2. It is important to experiment and determine that the USB controller works with the USB hub or extension device, if the user plans to use such a device.
3. This Laser/Agni controller does not work with USB1.1 connections. If you connect other USB devices compatible only with 1.1, it may cause problems. All the USB devices including keyboard and mouse in the system shall comply with 2.0 specifications. Always check compatibility for wireless USB devices, if you are using one.
4. Power saver and Screen Saver modes on your computer should be turned off. If these modes are activated, it can cause problems in recognizing the USB connection on a continuous basis.
5. The LinkMotion Agni controller can be configured to power either from the USB connection of the PC or from an external 5 VDC power supply. There is a jumper on the controller board that allows the selection of the power supply for the controller.
6. In case of Laptop computers AC power unit shall be connected to an AC outlet while operating external USB devices. Sometimes, aggressive power save mode settings under battery operations could activate the disconnection of USB devices. Re-Launching LinkMotion will re-activate the communication in such a situation.
7. Approximately 1 minute of machine operation uses 1MB of SD memory for vector work. This controller supports up to 4GB Memory. If you are using LinkMotion version 3.5 or higher, you could use either SD or SDHC memory cards.
8. It is impossible to test all the available SD Memory cards in the market but we have listed in the following lists ones that work and ones that do not work with this USB controller.

Memory chips tested and working with this controller: Sandisk (1 gb, 512 mb, 256 mb), Topram 1gb, PNY 1gb, PNY 4gb SDHC, Samsung 1gb, Transcend 1gb and 'Made in China Generic' 1gb.

Memory chips found not working with this controller: Kingston 2gb (non SDHC) and 4gb SDHC.

9. If serial number of the controller is not recognized by LinkMotion then user will see a message "Unrecognized serial number _____". Once you click on OK button it will display a second message as "The maximum working area is 1"x1" or 25.4mm x 25.4mm. Linkmotion software can output only 1"x1" jobs at that point. Unauthorized controller bought from unauthorized vendors can cause this kind of problem. Get in touch with Solustan to verify your serial number. Not making proper USB connection with the controller can also display this kind of message and simply disconnecting USB cable from computer end and reconnect and re-launch LinkMotion should resolve it.

10. Laser/Agni Controller Board Lights:

There are three LED lights available to attach to the Agni Controller board – Blue, Amber, and Red. These lights behave in the following manner when connections are made and the board is powered:

Blue LED Flashing Slowly – No USB Connection

Blue LED Steady – USB powered up and ready

Amber LED Flashing Slowly – Waiting for firmware update

Amber LED Flashing Fast – No SD (Memory) card

Amber LED Steady – USB ready with SD card

Red LED – Turns on when board is powered. It turns off when it makes proper connection with LinkMotion. It also turns on every time when any machine motion is detected.

Red LED Flashing – If hardware switch for Repeat is installed on the Laser/Agni controller and LinkMotion.INI file is setup properly, then, Red LED starts flashing after a job is processed one time.

Pressing the Repeat switch will send the job again to the machine. After a job is processed one time it is ready to repeat the last job using the repeat button on the USB controller as many times as user wishes.