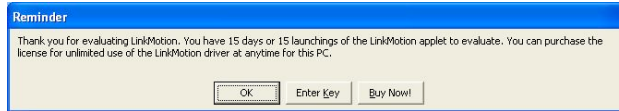




Procedure for LinkMotion Software license key:

6/12/13

We welcome you for trying out our LinkMotion driver software. You will see the following message on the screen when LinkMotion is launched from the systems tray every time when you are using the program as demo.



Click on the **Enter key** button, whenever you decide to purchase or you have purchased it and you are ready for full license key. Enter Key will open following dialog box and show the **Hardware fingerprint** of your computer.



You need to provide us the proper information for **Hardware fingerprint, Business Name, valid email for Business along with the LinkMotion version and operating system you are using**. Fill out this information in each respective boxes, save the file and email it to us at support@solustan.com. **Solustan is not responsible for any incorrect Hardware fingerprint code you provide. Please double check this information before you send it to us.** Software license working with Hardware fingerprint and matching code provided by Solustan, Inc. is intended to work only on the computer with the proper hardware fingerprint. **Key Code will not be generated for any incomplete information.**

All LinkMotion product licenses are non-transferrable. User will need to buy another license for another computer. Additional license can be made available for an extra charge.

Hardware fingerprint:

Name: (Business name or Computer user's name)

Valid email for Business or User:

Your Operating System: Win 8 64 Win 8 32
 Win 7 64 Win 7 32 Win XP

Your LinkMotion Application: LinkMotion USB Laser
 LinkMotion USB LinkMotion Lite LinkCAM M&G
 LinkMotion VC LinkMotion VC-Laser LinkMotion Galvo
 LinkMotion HPGL Eng. LinkMotion HPGL Vinyl LinkMotion Leetro

LinkMotion USB Laser, LinkMotion USB and LinkMotion Lite users need to verify Serial number of the USB controller card. Launch your LinkMotion application and select the Help tab(menu). Last thing at the bottom right it displays the serial number for the USB Controller. Please write this serial number in the box below.

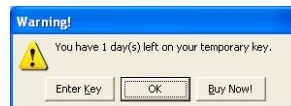
USB Controller Serial Number:

After you send us all of the information in above boxes, we will send you the customized Key Code. This key code is long text containing numeric numbers as well as alphabet letters.

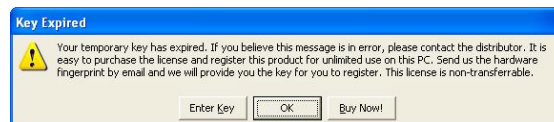
Key: (Key Code for LinkMotion License)

We highly recommend that you simply copy and paste this in the **Key** section by bringing back the same **Enter Key** screen. **Click OK** and you are ready to use your LinkMotion driver software license.

If you did not purchase within 30 days or 30 launchings you will see a last reminder as seen in the following picture. It will be best to purchase at this point.



Once the trial period of LinkMotion expires, you will see the following message.



Click on the **Enter key** will always give you the Hardware Fingerprint and you can purchase the software any time if you were using the trial version.